

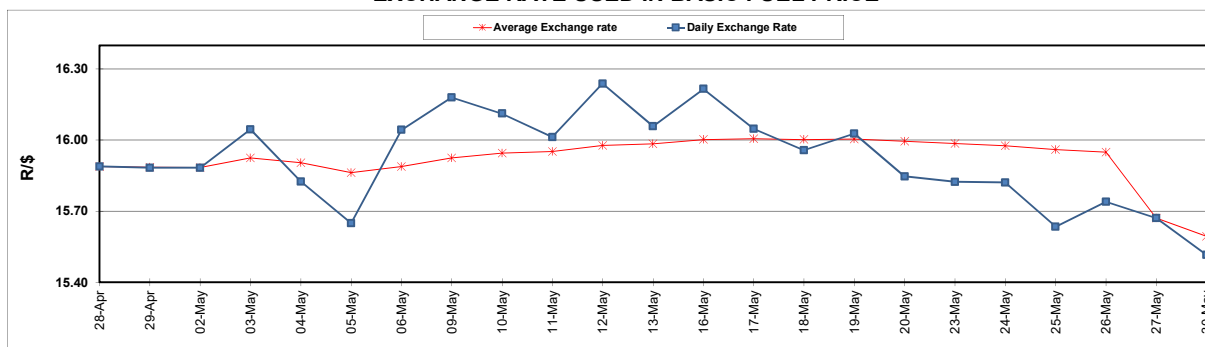
	PETROL 95 ULP	PETROL 93 ULP & LRP	DIESEL 0.05%	DIESEL 0.005%	ILL. PAR.
GAUTENG PUMP PRICE (SA c/l) AS FROM 01/06/2022	2,417.000	2,394.000	-	-	-
WHOLESALE PRICE (SA c/l) AS FROM 01/06/2022	-	-	2,309.440	2,322.840	1,820.288
SINGLE NATIONAL MAXIMUM RETAIL PRICE	-	-	-	-	2,402.000
BASIC FUEL PRICE - 30/05/2022 (SA c/l)	1,630.691	1,577.267	1,581.587	1,595.487	1,601.143
PRESS RELEASE CONTRIBUTION TO BFP 27/05/2022 - 30/05/2022 (SA c/l)	1,264.410	1,241.410	1,497.630	1,514.030	1,446.128
UNIT OVER/(UNDER) RECOVERY - 30/05/2022 (SA c/l)	(366.281)	(335.857)	(83.957)	(81.457)	(155.015)
AVERAGE BASIC FUEL PRICE 27/05/2022 - 30/05/2022	1,621.267	1,567.575	1,573.727	1,586.526	1,596.495
AVERAGE UNIT OVER/(UNDER) RECOVERY 27/05/2022 - 30/05/2022	(356.857)	(326.165)	(76.097)	(72.496)	(150.367)

### ANALYSIS MOVEMENT OF AVERAGE OVER/(UNDER) RECOVERY

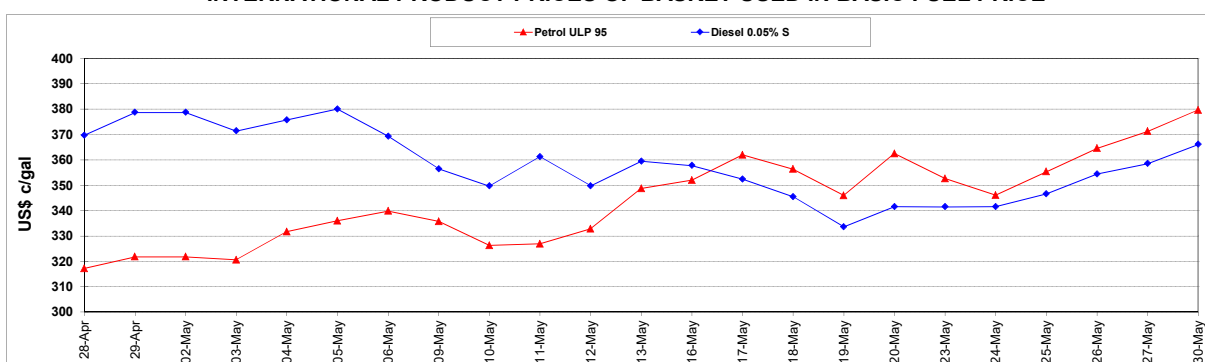
	PETROL 95	PETROL 93	DIESEL 0.05%	DIESEL 0.005%	ILL. PAR.
- MOVEMENT IN INTERNATIONAL PRODUCT PRICES	(393.797)	(361.882)	(111.954)	(108.645)	(186.743)
- MOVEMENT IN EXCHANGE RATE	36.940	35.717	35.857	36.149	36.376
AVERAGE UNIT OVER/(UNDER) RECOVERY 27/05/2022 - 30/05/2022	(356.857)	(326.165)	(76.097)	(72.496)	(150.367)

### R/\$ EXCHANGE RATE - (R/\$15.5160 - 30/05/2022)

#### EXCHANGE RATE USED IN BASIC FUEL PRICE



#### INTERNATIONAL PRODUCT PRICES OF BASKET USED IN BASIC FUEL PRICE



#### BASIC FUEL PRICE IN SA CENTS PER LITRE

